



# Reportable Incidents

The Bureau of Quality Improvement Services (BQIS) keeps track of certain incidents to make sure that individuals receiving waiver services are healthy and safe. If something happens that could put you at risk, or cause you to be hurt or in danger, please tell your Case Manager. These events must be reported to BQIS.



**NEGLECT** means that you don't have a safe place to live and food to eat or medicine that you need. Neglect must also be reported to Adult Protective Services or Child Protective Services.

**ABUSE** means that someone has hurt you in one of these ways. Abuse must also be reported to Adult Protective Services or Child Protective Services.



**EXPLOITATION** means that someone has used your money, belongings, or identity for their own profit or for someone else's profit. Exploitation must also be reported to Adult Protective Services or Child Protective Services.



**DEATH** must also be reported to Adult Protective Services or Child Protective Services.



## PEER-TO-PEER AGGRESSION



means that another person receiving waiver services hurt you so badly that you needed first aid or help from a doctor or nurse.

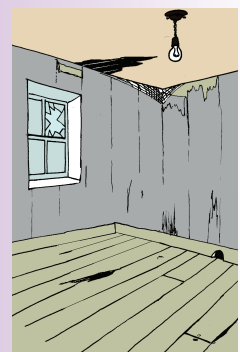
## CRIMINAL ACTIVITY

by an individual receiving services or a provider — this means doing anything that is against the law.



## DANGEROUS CONDITIONS

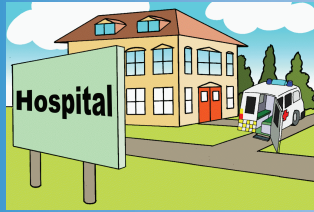
including **FIRE** at any place where you receive services.



**ELOPEMENT** is when someone runs away. Elopement and a **MISSING PERSON** are both reported to BDDS.



## EMERGENCY INTERVENTION



If you have to go to the emergency room for any reason, please tell your Case Manager.

## FALL RESULTING IN INJURY

Even if the injury was not serious, it must be reported.



**INJURY WITH UNKNOWN CAUSE** is when you have any type of injury, but no one knows how it happened. If the injury could have happened because of abuse, neglect, or exploitation, or if you have to go to the doctor because of the injury with unknown cause, it must be reported.

**SIGNIFICANT INJURIES** including but not limited to these things must be reported:

- Fractured or broken bone
- Any second or third degree burn
- Needing help while choking
- Three inch bruise or repeated bruising
- Cut requiring nurse/doctor attention
- Bedsores
- Bite or puncture wound
- Eating/drinking items that are not food or drinks



## NO HEAT



## NO WATER

**MEDICATION ERROR** means that someone made a mistake when they gave you your medicine.



## USE OF PRN MEDICATION RELATED TO BEHAVIOR

means that if you are given medicine that you only take when behaviors happen, it must be reported.



## USE OF ANY AVERSIVE TECHNIQUE

If any of these things is done to you, it must be reported.



## USE OF ANY PHYSICAL OR MECHANICAL RESTRAINT

If you are held in place so you cannot move, even if it is written in your Behavior Support Plan; even if it has been approved by the Human Rights Committee; or even if informed consent has been given, it must be reported.

